

Deburring with consistency to high part quality with a limited workforce

@DeburringEXPO

Karlsruhe 11.12.2023

Teemu-Pekka Ahonen, Product Manager – Robotics

Fastems Oy, Finland



INTELLIGENT FACTORY AUTOMATION SOLUTIONS AROUND CUTTING MACHINE TOOLS

Key Facts

- 100 M revenue
- 450 employees
- Founded 1901, family-owned
- 4,000+ installed systems
- Open integrator with 90+ machine tool brands integrated
- Main markets in Europe, North America and Asia

Industries we work with?

- Production technology
- Aerospace
- Subcontractors (Job shops)

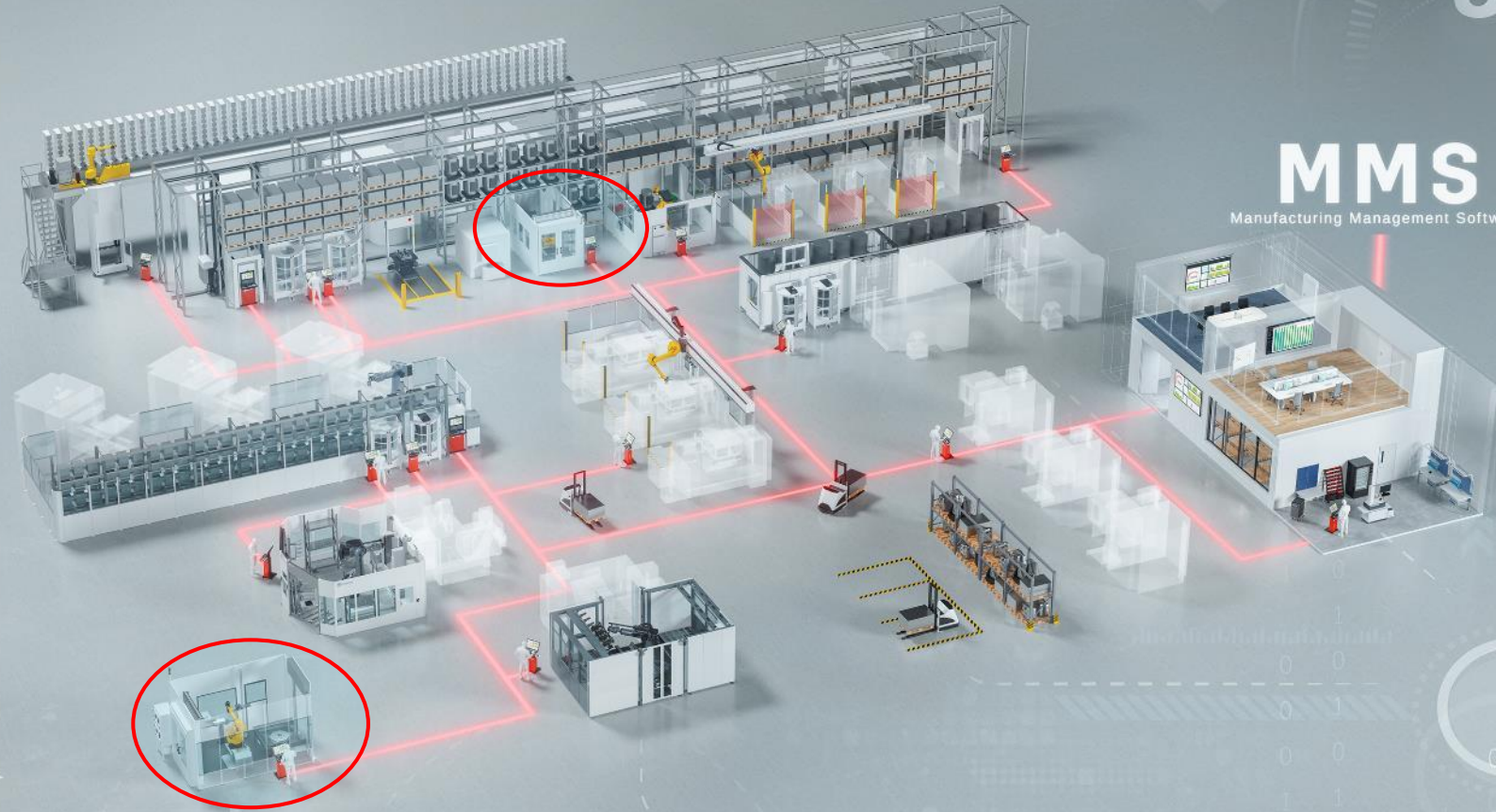
What we supply?

- Manufacturing Management Software (MMS) & MOM
- Flexible Manufacturing Systems (FMS)
- Robotic automation solutions
- Services

Purpose

Sustainable, strong and competitive manufacturing base can be achieved only by automation and digitalization. Fastems helps metalworking manufacturers in improving their productivity and profitability by providing intelligent automation, software and services.





8760

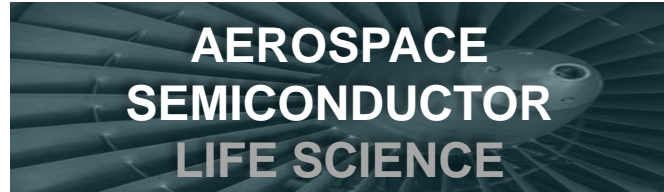
hours/ year

MMS

Manufacturing Management Software



Fastems deburring & finishing systems



Aerospace parts

- Engine structural parts (LPT and Fan case, combustor chamber)
- Turbine and fan blades
- Structural parts of aircraft fuselage

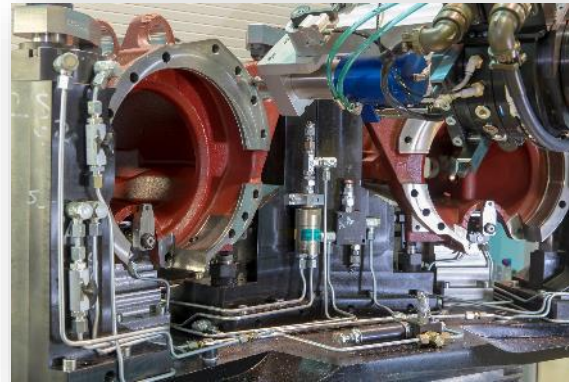
Materials

- Aluminum, titanium, Inconel, magnesium



Parts

- Numerous different, long lifetime items materials
- Steel, aluminium, cast iron



Parts

- Numerous different, **short lifetime** products materials
- Steel, aluminium, cast iron

Solution Elements

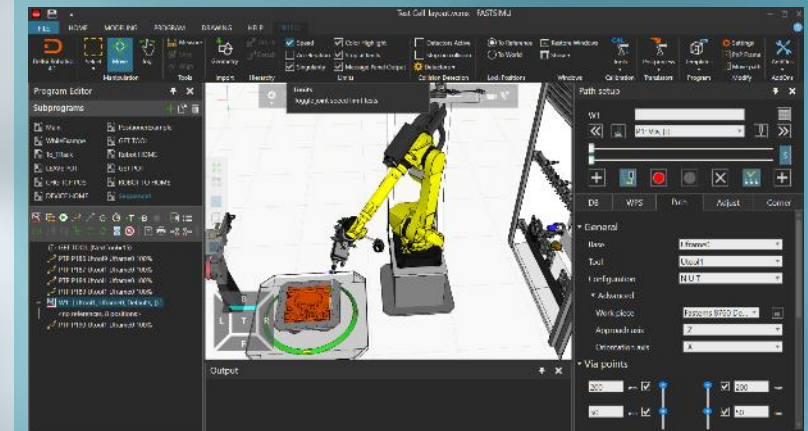
RFC Cell Hardware



Finishing Process



Offline Programming



= Fastems finishing solution

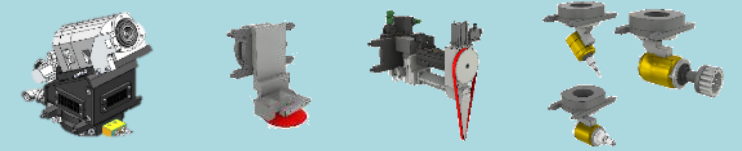
FMS integrated or stand-alone



Versatile Finishing Solution

Delivery-proven technologies for flexible finishing with Tool-To-Part process

Large process tool and accessory selection for a wide variety of finishing processes



Process station alternatives:

- High accuracy servo stations with 1- or 2-axis in 2.500 kg or 6.000 kg payloads
- Rotary pallet changer –style servo positioner for standalone cells with lighter payloads

Powerful control features in Fastems MMS control

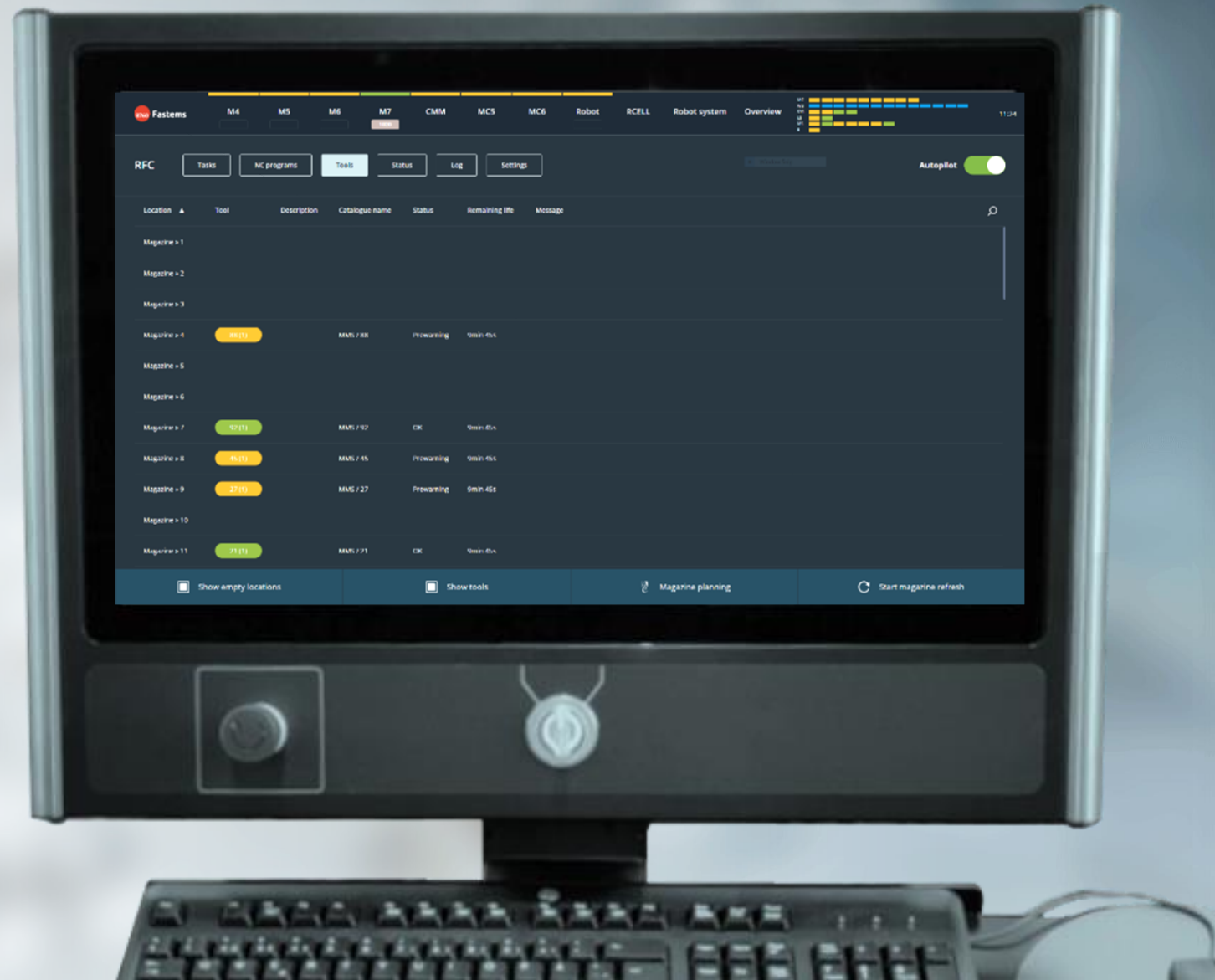
- Tool data management: tool lifetime tracking and lifetime control through MMS
- Job management for stand alone cells
- MMS insights and dashboards available also for finishing cells

Manufacturing Management Software

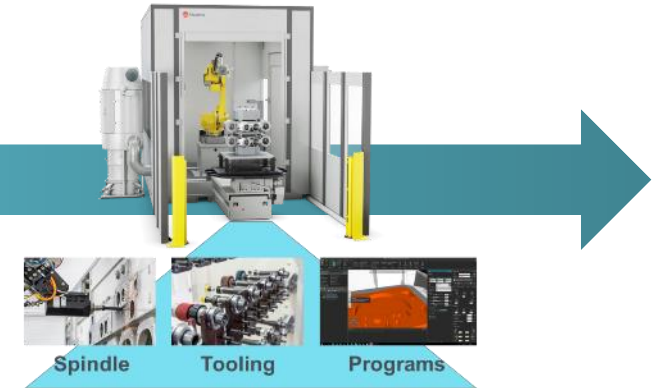
MMS for RFC

Plan, run and monitor your production.

- Finishing tool data management
- Tool lifetime tracking
- Order and job management
- MMS Insights and dashboard options for performance monitoring



Finishing Process - Consistently towards quality



Pre-studies and process tests with supplier before investment

Joint finishing process creation, starting from system commissioning

Long-term cumulation of process know-how



Integrated Finishing Automation

FMS integrated finishing solutions provide the highest level of productivity

- Finishing is an integral part of overall automation
- Long unmanned production despite changing parts that are produced
- Predictive planning, forecasting and seamless monitoring through the MMS as a unified control for machine tools and the robotic finishing cell
- Increased transparency and safety: checking tool status, tool life and availability in the finishing cell via the control system
- Significantly reduced need for manual loading and deburring operations
- Operator duties change from deburring into programming and keeping the system running

Thank you

teemu.ahonen@fastems.com